



LAND
CT SERVICES




LAND COORDINATES
TECHNOLOGY

WE ARE.....

“Land CT Services was established with the aim to provide Intentional standard solution and geomatics data to the constantly developing world. we belive in quality and standards rather than quantity. Our belief as earned us ample amount of happy and satisfied customers all over the world “

.....

Keep In Touch
With Us

+91 98418 04241, +91 85905 85335 

lctsurveyins@gmail.com, lctskerala@gmail.com 

Chennai, Ernakulam 

LAND CT SERVICES

“LCT has a well experienced technical team especially for the project division. We use advanced Survey equipment like Total station, DGPS, Drone and Hand held 3D Scanner(Lidar). We also work with GIS and Photogrammetry. We have successfully completed many projects for the public, private and government sectors”

OUR VERTICALS



Projects



Sales



Services



Training





OUR TECHNOLOGIES

Total Station

“A total station is a surveying instrument that combines an electronic theodolite and an electronic distance meter (EDM) to provide accurate measurements of both horizontal and vertical angles as well as distances.”



DGPS

“Differential Global Positioning System (DGPS) is an enhancement to Global Positioning System that provides improved location accuracy, from the 15-meter nominal GPS accuracy to about 5 cm in case of the best implementations.”





Drone Survey

What is meant by drone survey? A drone survey refers to the use of a drone, or unmanned aerial vehicle (UAV), to capture aerial data with downward-facing sensors, such as RGB or multispectral cameras, and LIDAR payloads.

LIDAR

LiDAR is an acronym for Light Detection and Ranging. It's essentially a remote sensing method that uses rapid light pulses to map out the surface of the earth. It uses the pulse from a laser to collect measurements to create 3D models and maps of objects and environments.



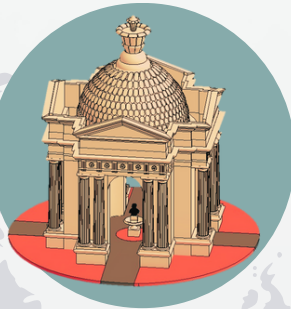
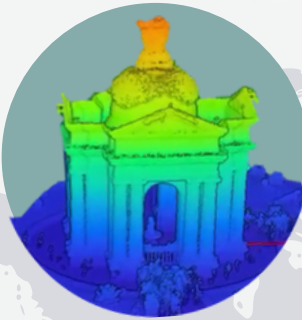
GPR

Ground-penetrating radar is a geophysical method that uses radar pulses to image the subsurface. It is a non-intrusive method of surveying the sub-surface to investigate underground utilities such as concrete, asphalt, metals, pipes, cables or masonry.

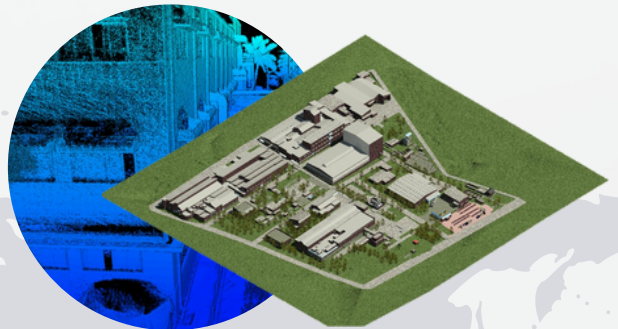
Our Milestones

Reverse Engineering

Reverse engineering, sometimes called back engineering, is a process in which software, machines, aircraft, architectural structures and other products are deconstructed to extract design information from them.



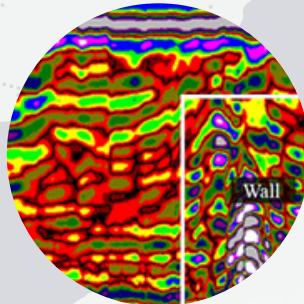
Bharath Vandana Park



C.U.M.I BANGALORE



SCAN TO BIM



GPR



GNSS



CADASTRAL & GIS

ADDRESSES:

LAND CT SERVICES

2nd Floor, Suprans Arcade,
Near Metro Pillar 548, Aiswarya
Road, Palarivattom, Kochi,
Kerala, INDIA- 682025.
lctskerala@gmail.com

LAND COORDINATES TECHNOLOGY

#6, Parasakthi Nagar, 1st Main Road,
Camp Road, Selaiyur, Tambaram,
Chennai, Tamilnadu,
INDIA - 600073.
lctsurveyins@gmail.com

www.lctss.in